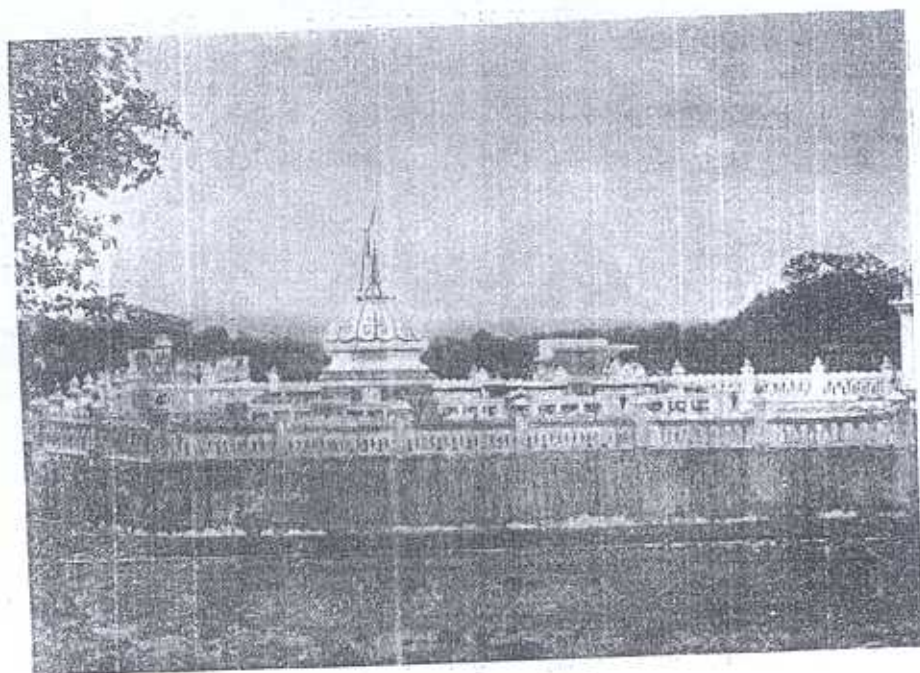


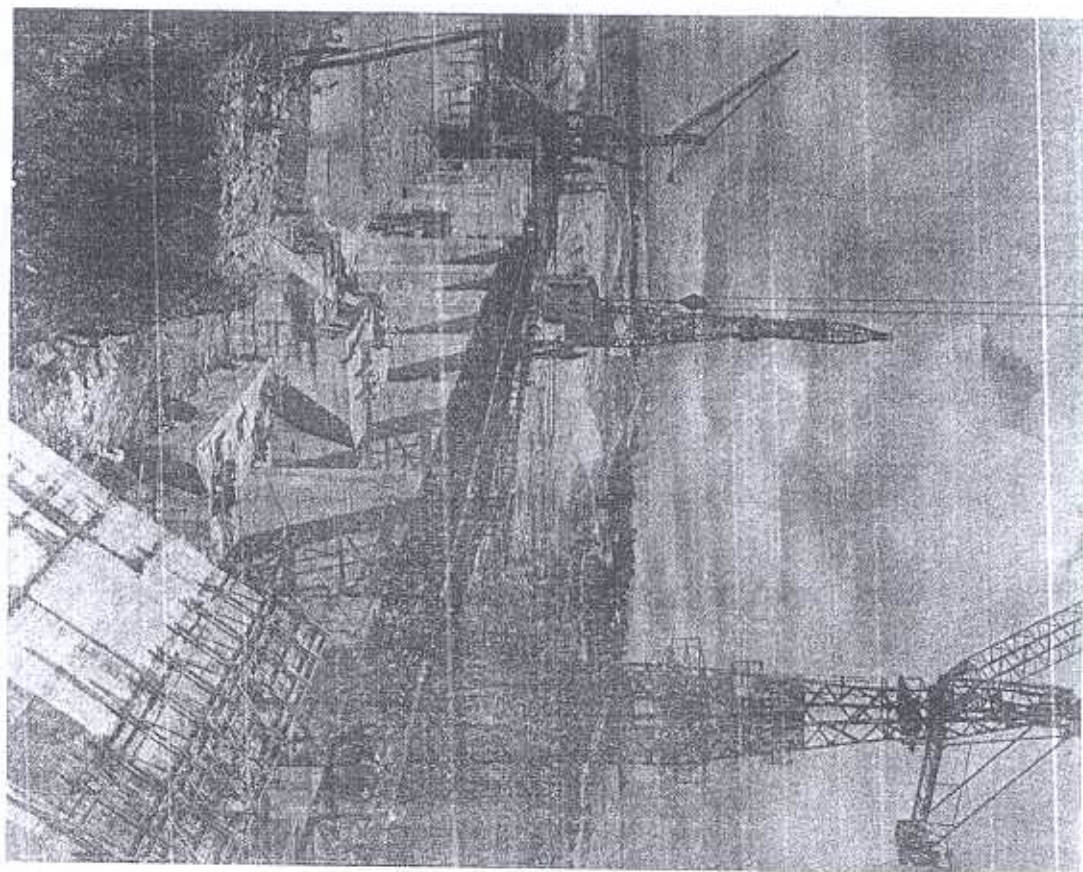
Parasnath Temple at Parasnath



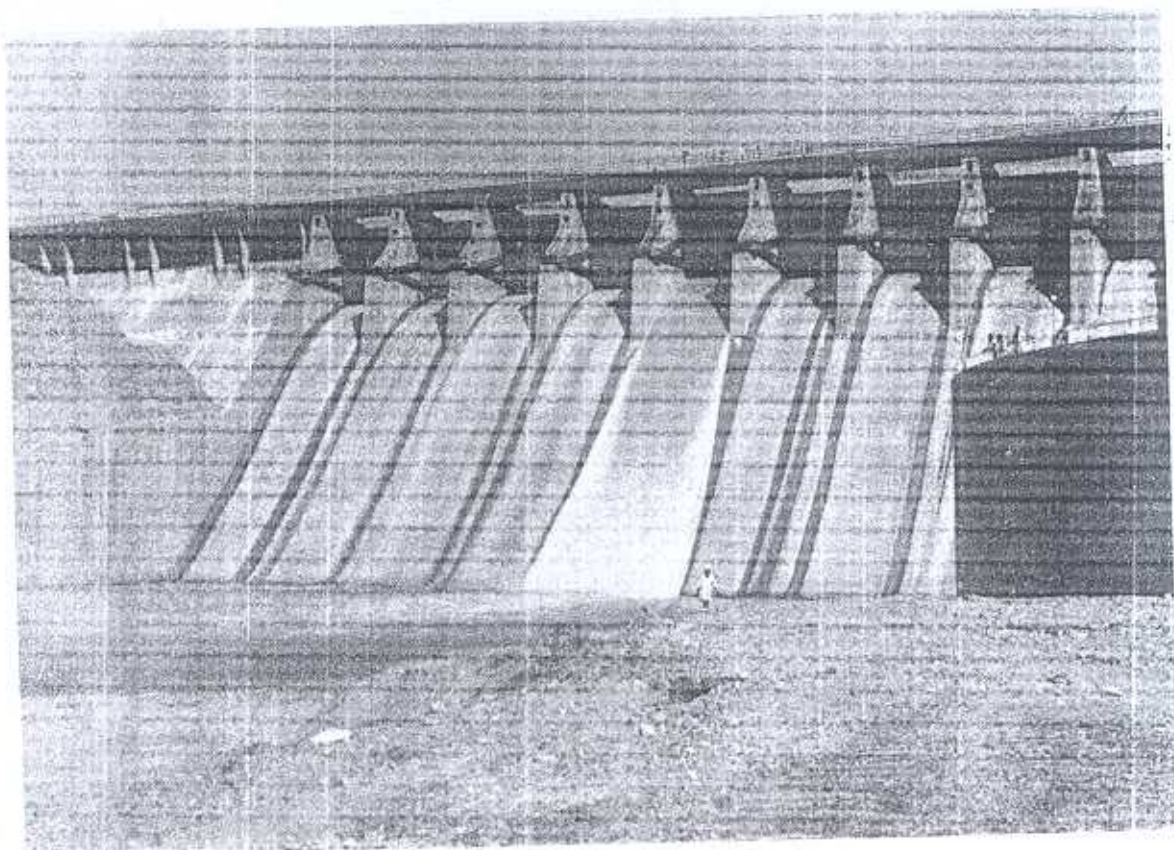
Parasnath Temple at Parasnath



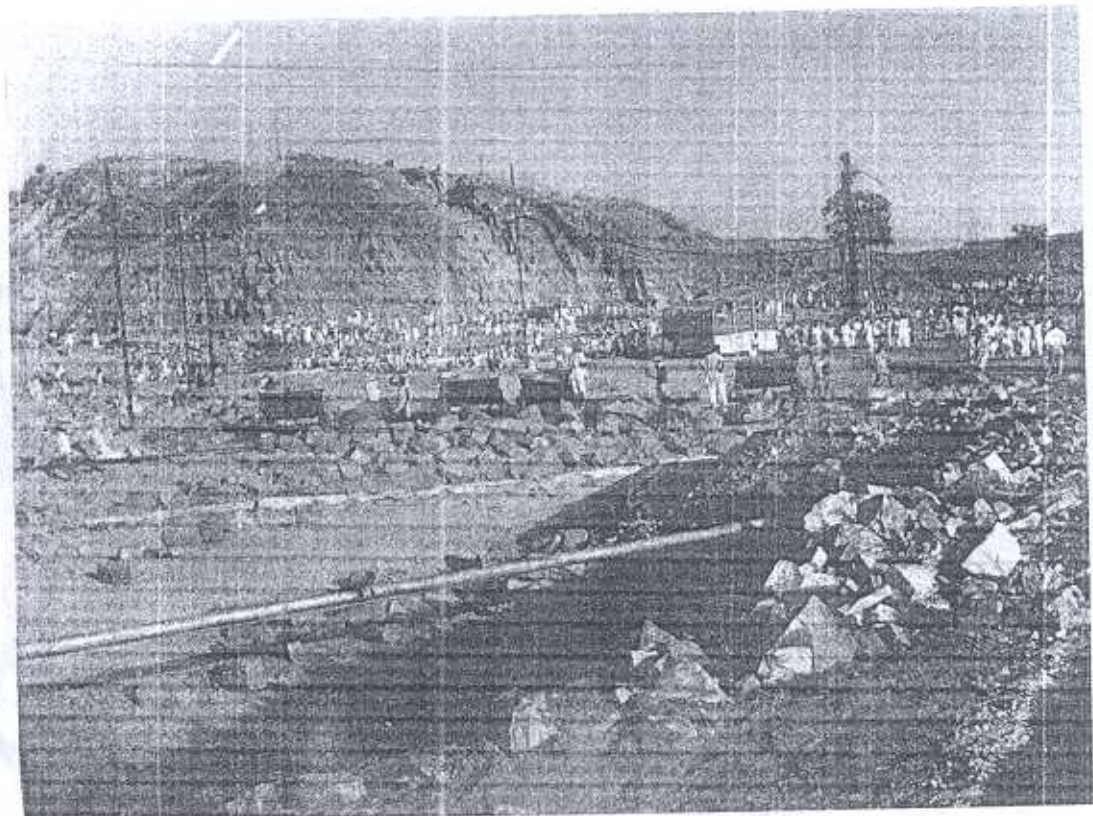
Jalamandir at Parasnath



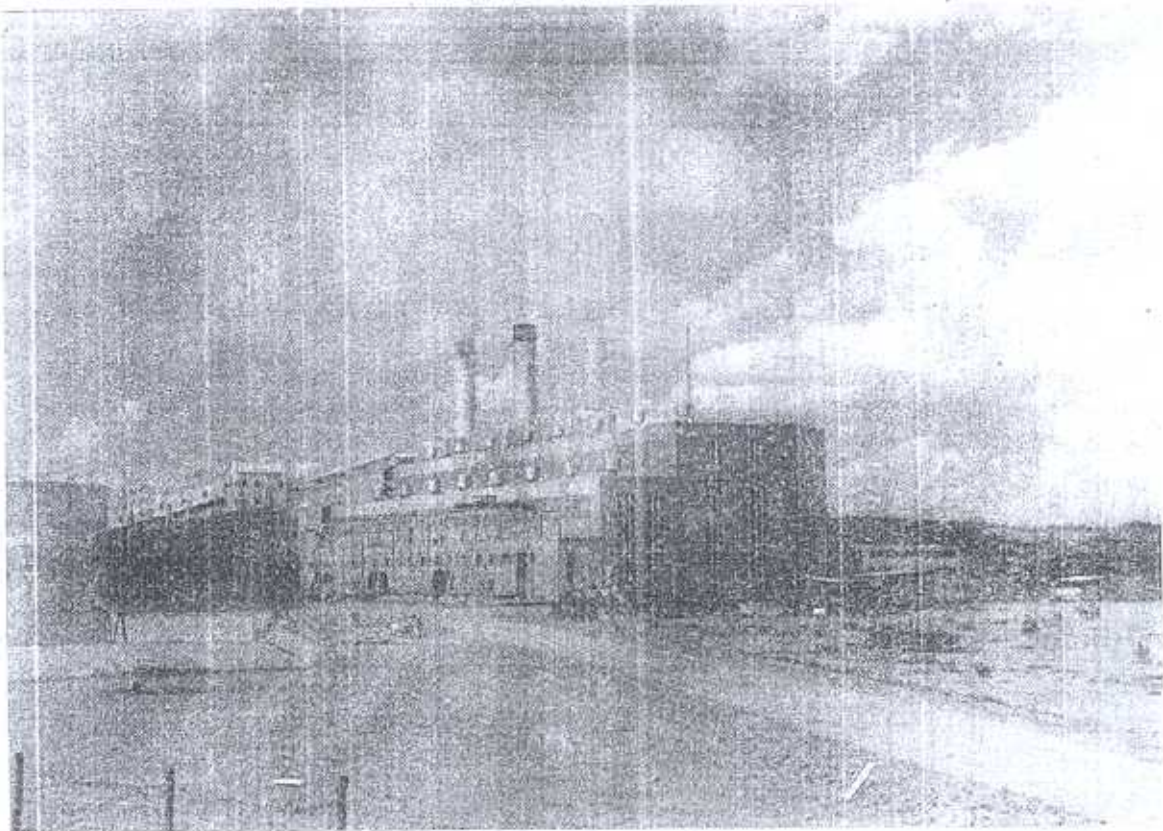
Concrete Dam, Komar, 1952 (under construction)



Konar Dam, 1955 (down-stream view)

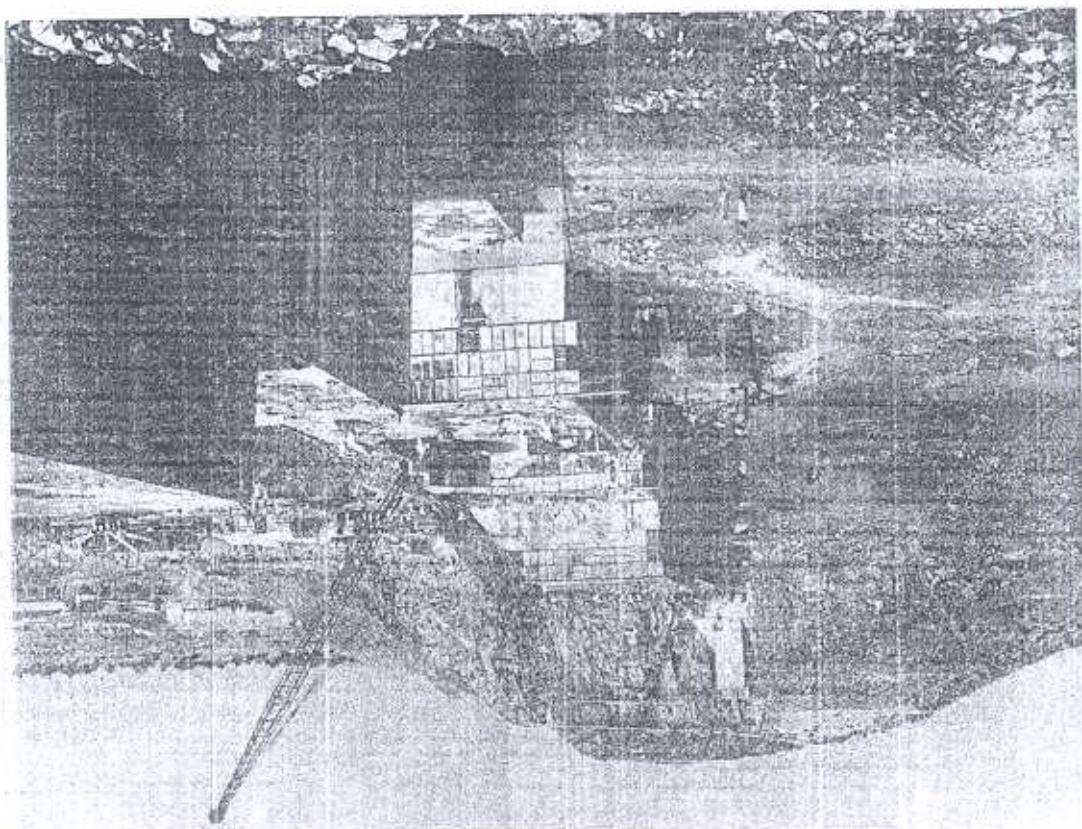


General view of Tilaiya Dam site, 1950

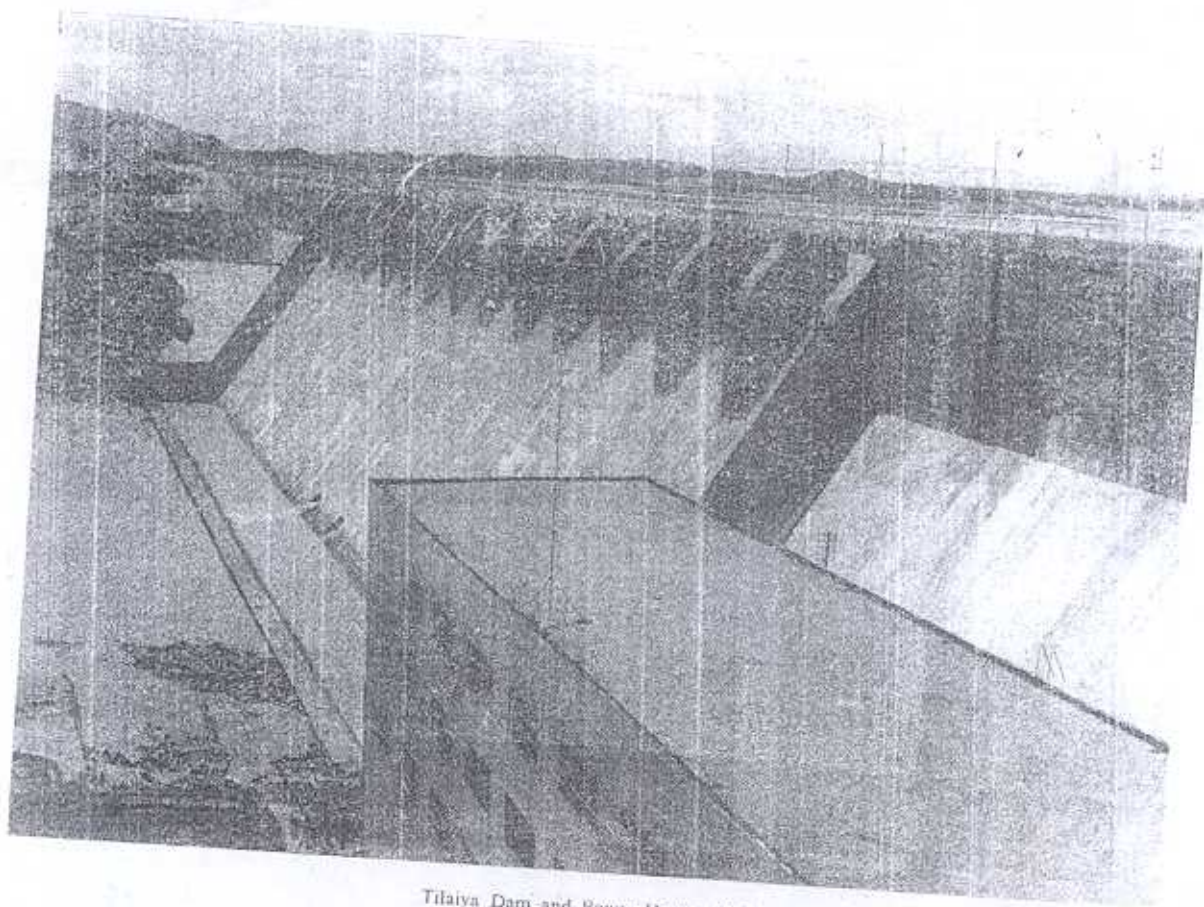


Bokaro Thermal Power Station, 1953

Tilaya Dam, 1952 (under construction)



Tilaya Dam site, 1950



Tilaiya Dam and Power House, 1953